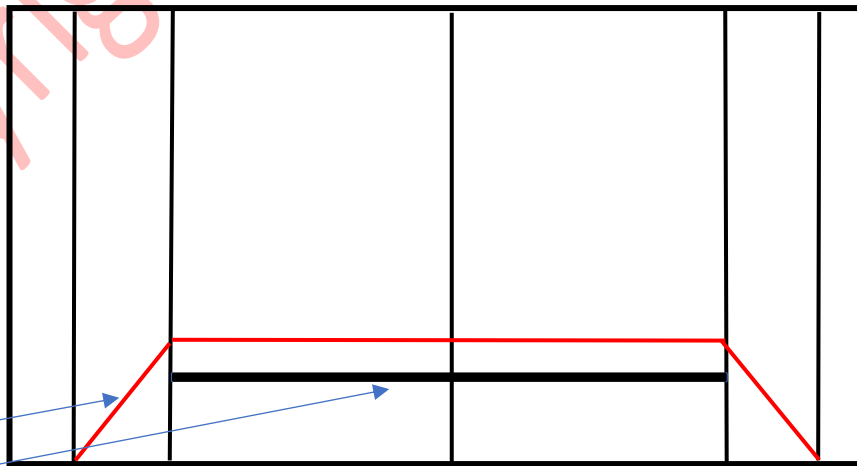


Tabletop Jeweler's Bench with Pliers Rack and Pull-Out Shelf Martha Aleo  
[marthaaleo@gmail.com](mailto:marthaaleo@gmail.com) Ornamento.blog

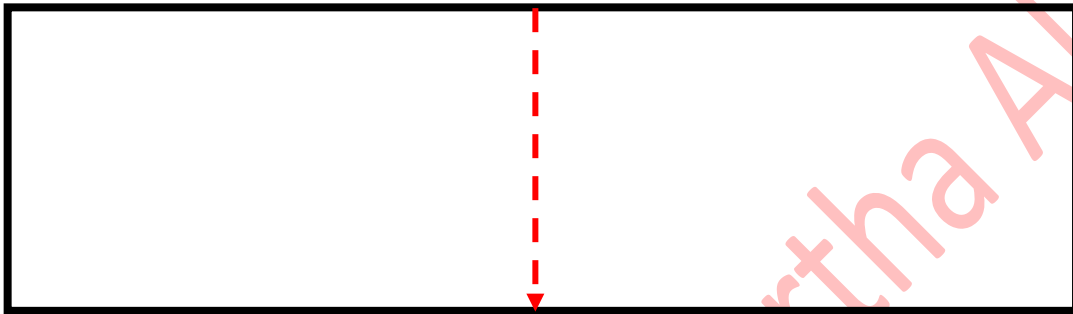
SAWLINE FOR BENCH TOP **IN RED**  
NOT DRAWN TO SCALE



4.5"  
9"

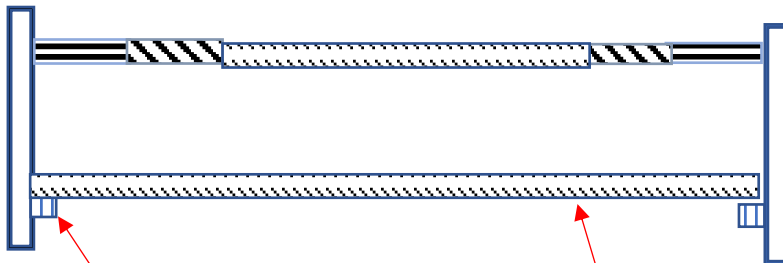
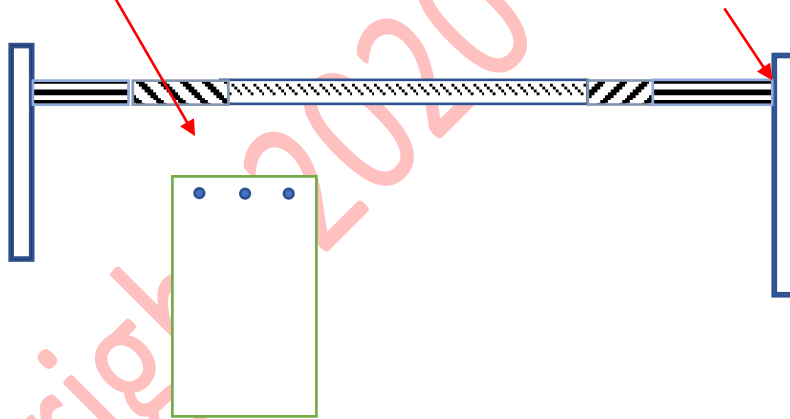
2"

Bench top with cuts (not to scale)



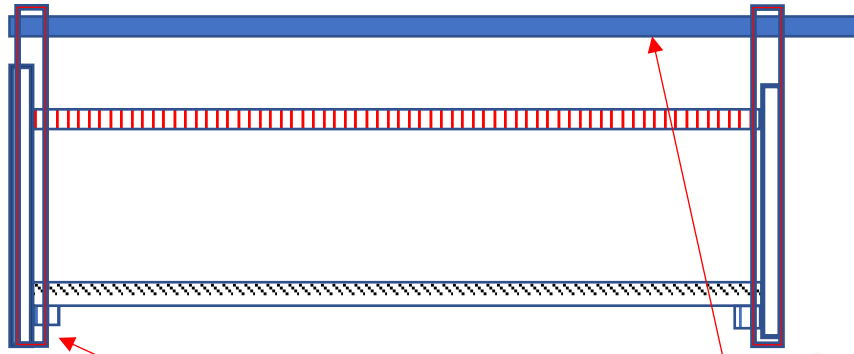
Saw board in half

Drill holes and screw board halves to top piece leaving a lip on each side



Slats for shelf attached with three screws

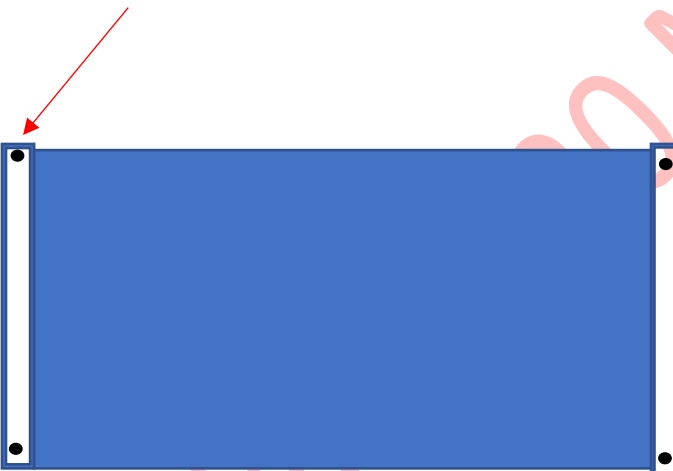
Shelf cut to fit



Bench from rear. Screw slats to the back of the board and attach the paint stirrer to the top for a pliers rack. The slats on the back will also act as a stop for the pull-out shelf.

Final step:

Drill four pilot holes on the bottom of the shelf. Screw in legs.



Bottom of bench